

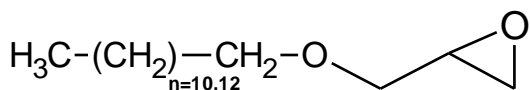
# LAPOX<sup>®</sup> ARD-13

Technical Data Sheet | Polymers Business

## Description

Lapox ARD-13 is a low viscosity, long chain aliphatic mono epoxide reactive diluent based on C<sub>12</sub>-C<sub>14</sub> alcohol. It is compatible with all types of epoxy resins in any proportion. Resins diluted with Lapox ARD-13 can be suitably cured by epoxy curing agents for a variety of applications. A higher proportion of this product imparts flexibility in the cured system and hence affects glass transition temperature significantly.

## Chemical structure



## Advantages

High resistance to solvents and ammonia, improves wetting and processability, low surface tension and good leveling, provides very good flexibility, reduces viscosity efficiently and relatively low health risk due to its low vapour pressure

## Applications

Civil engineering and flooring, decorative gravel surfaces | structures, electronic encapsulation, FRP composites, potting, tooling and structural adhesives

## Typical specifications

Properties	Unit	Test method	Values
Appearance	-	Visual	Clear liquid
Colour	GS	ASTM D1544	Max 1
Epoxy value	Eq/kg	ASTM D1652	3.35 - 3.70
Epoxy equivalent weight (EEW)	g/eq	ASTM D1652	270 - 299
Viscosity at 25°C	m Pas	ASTM D2196	4 - 12
Hydrolysable chlorine	%	ASTM D1726	Max 0.10

## Packaging

Lapox ARD-13 is available in 195 kg MS | HDPE drums and 900 kg IBC. Other packing may be considered on request.

## Storage and handling

Lapox ARD-13 should be stored in a cool and dry place, preferably in a sealed container and should not be exposed to direct sunlight. This product has a shelf-life of 2 years if stored in its original container between 2°C and 40°C away from humidity and excessive heat. Please refer to the Safety Data Sheet (SDS) for detailed instructions on storage and handling.

## Safety

Wear personal protective equipment (PPE). Avoid contact with the eyes and skin. In case of direct contact and irritation, the resin should be washed off immediately with soap and warm water. Avoid breathing vapours, mist or gas. Please refer to the SDS for detailed safety instructions.

## Spills and disposal

In case of spills, sweep up and shovel the spilled material. Keep spilled material in suitable, closed containers for disposal. Soak up with an absorbent such as clay, sand or other suitable material. Flush area with water to remove trace residue. Do not allow the product to reach the sewage system. Waste must be disposed of in accordance with federal, state or local regulations, as applicable.

# LAPOX<sup>®</sup> ARD-13

Technical Data Sheet | Polymers Business

---